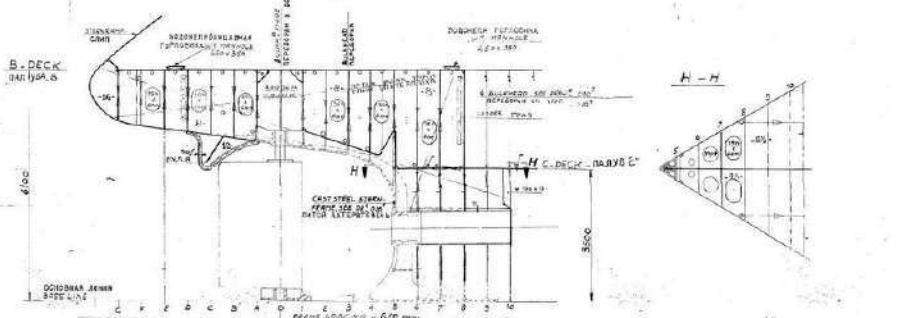
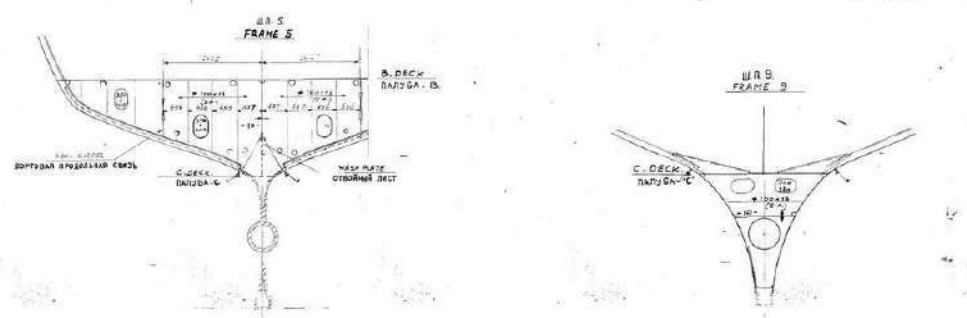


WIZ	ОМЩИРИВНИК	ДАТУМ	ЛИСТ
1	LLOYD'S WIZARDINGEN	1914	3

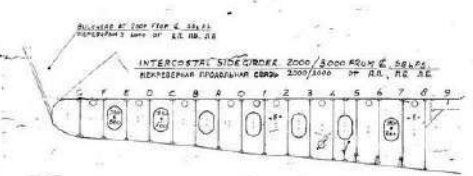
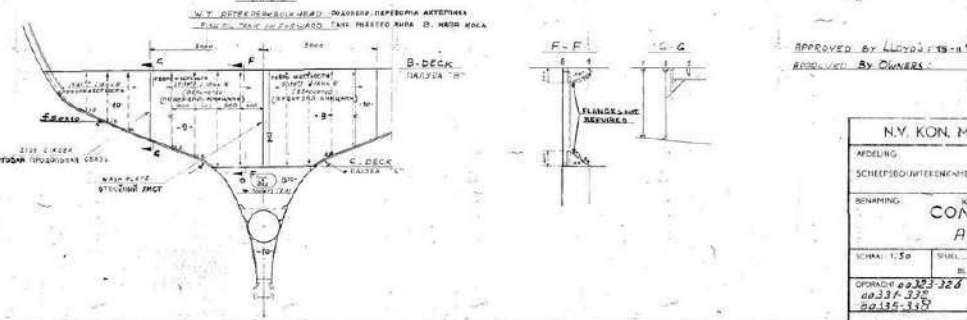
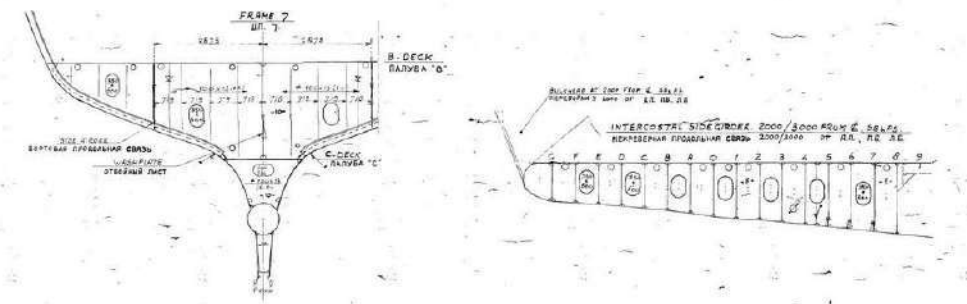
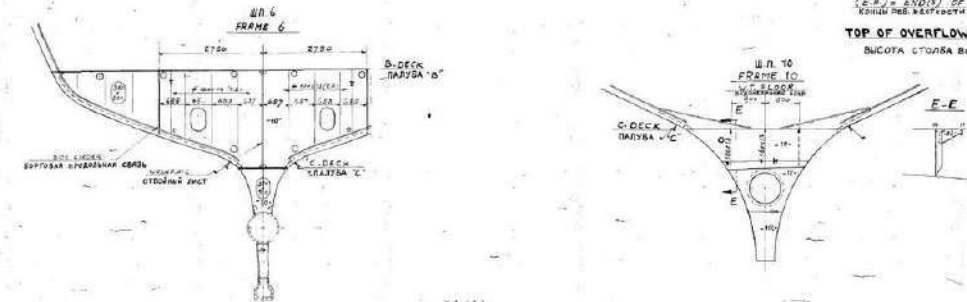
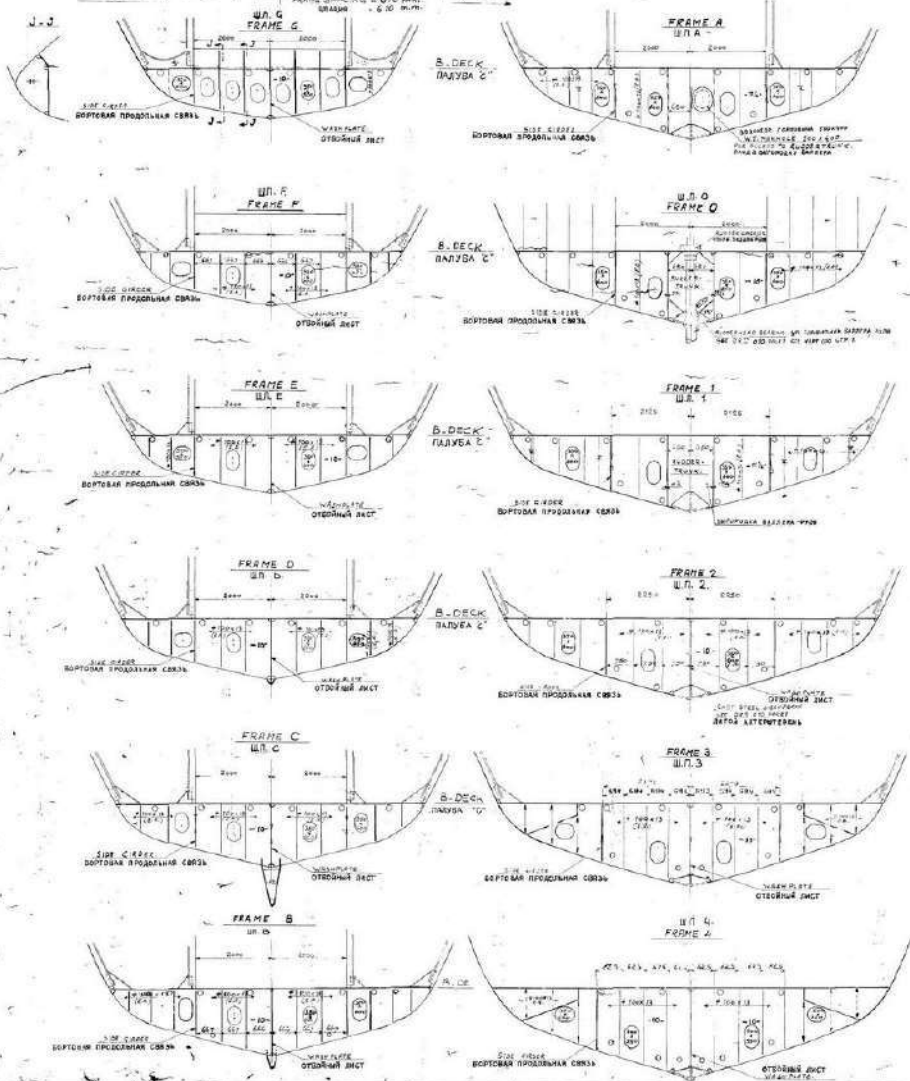
LONGITUDINAL SECTION AT G



CROSS SECTIONS LOOKING FORWARD



LLOYD'S LENGTH OF THE SHIP = 92.16 m = 302.37  
 ДЛИНА ПРИБЛИЖИТЕЛЬНОГО ПЕРИОДА = 92.16 м = 302.37  
 (E & J) END(S) OF THE STIRRERS TO BE TAPERED SO  
 THAT THE DISTANCE BETWEEN THE FRAMES IS  
 TOP OF OVERFLOW 457 ABOVE UPPERDECK AT SIDE  
 ВЫСОТА СТОЛБА ВОДЫ ПРИ ПЕРЕПОЛНЕНИИ НАД ВЕРХНЕЙ ПАЛУБОЙ

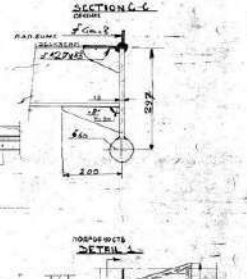
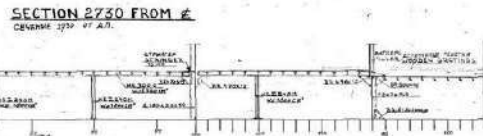
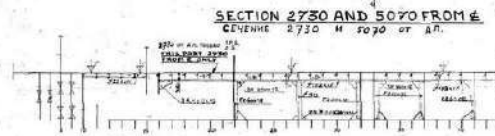
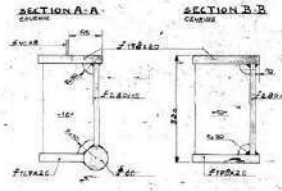


APPROVED BY LLOYD'S 18-11-13  
 APPROVED BY OWNERS

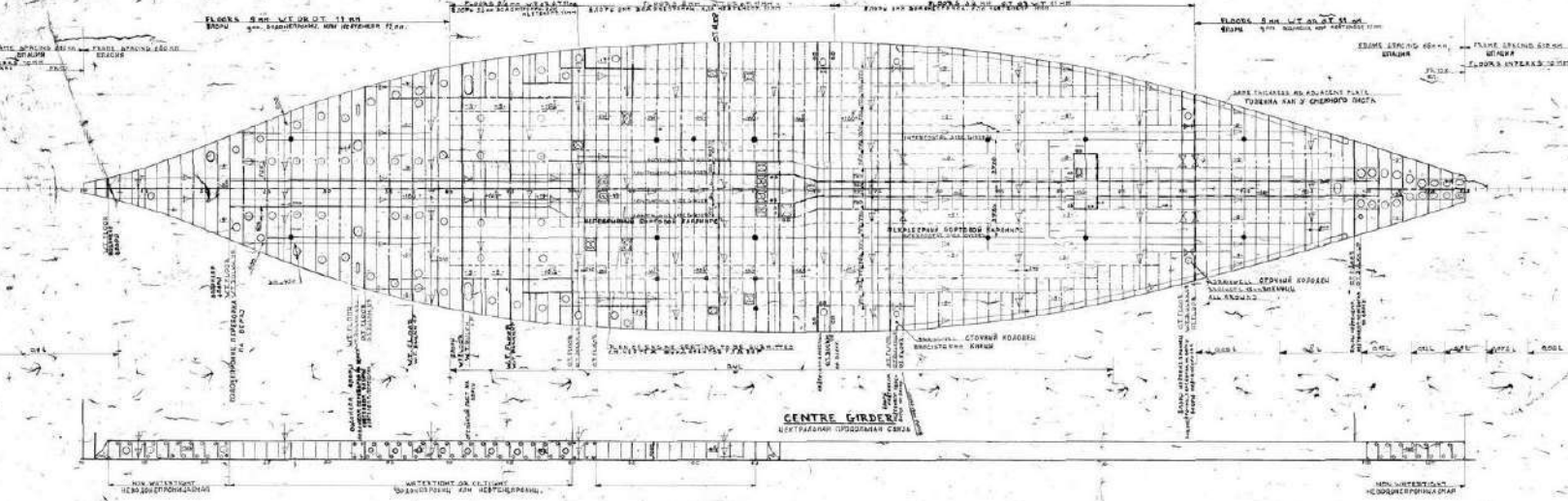
BENAMING CONSTRUCTION PLAN		SETED PEAK	
ОПИСАНИЕ КОМПОНЕНТОВ	КОЛ-ВО	КОЛ-ВО	КОЛ-ВО
00.211-12	1	00.211-13	1
00.211-14	1	00.211-15	1
00.211-16	1	00.211-17	1
00.211-18	1	00.211-19	1
00.211-20	1	00.211-21	1
00.211-22	1	00.211-23	1
00.211-24	1	00.211-25	1
00.211-26	1	00.211-27	1
00.211-28	1	00.211-29	1
00.211-30	1	00.211-31	1
00.211-32	1	00.211-33	1
00.211-34	1	00.211-35	1
00.211-36	1	00.211-37	1
00.211-38	1	00.211-39	1
00.211-40	1	00.211-41	1
00.211-42	1	00.211-43	1
00.211-44	1	00.211-45	1
00.211-46	1	00.211-47	1
00.211-48	1	00.211-49	1
00.211-50	1	00.211-51	1
00.211-52	1	00.211-53	1
00.211-54	1	00.211-55	1
00.211-56	1	00.211-57	1
00.211-58	1	00.211-59	1
00.211-60	1	00.211-61	1
00.211-62	1	00.211-63	1
00.211-64	1	00.211-65	1
00.211-66	1	00.211-67	1
00.211-68	1	00.211-69	1
00.211-70	1	00.211-71	1
00.211-72	1	00.211-73	1
00.211-74	1	00.211-75	1
00.211-76	1	00.211-77	1
00.211-78	1	00.211-79	1
00.211-80	1	00.211-81	1
00.211-82	1	00.211-83	1
00.211-84	1	00.211-85	1
00.211-86	1	00.211-87	1
00.211-88	1	00.211-89	1
00.211-90	1	00.211-91	1
00.211-92	1	00.211-93	1
00.211-94	1	00.211-95	1
00.211-96	1	00.211-97	1
00.211-98	1	00.211-99	1
00.211-100	1	00.211-101	1
00.211-102	1	00.211-103	1
00.211-104	1	00.211-105	1
00.211-106	1	00.211-107	1
00.211-108	1	00.211-109	1
00.211-110	1	00.211-111	1
00.211-112	1	00.211-113	1
00.211-114	1	00.211-115	1
00.211-116	1	00.211-117	1
00.211-118	1	00.211-119	1
00.211-120	1	00.211-121	1
00.211-122	1	00.211-123	1
00.211-124	1	00.211-125	1
00.211-126	1	00.211-127	1
00.211-128	1	00.211-129	1
00.211-130	1	00.211-131	1
00.211-132	1	00.211-133	1
00.211-134	1	00.211-135	1
00.211-136	1	00.211-137	1
00.211-138	1	00.211-139	1
00.211-140	1	00.211-141	1
00.211-142	1	00.211-143	1
00.211-144	1	00.211-145	1
00.211-146	1	00.211-147	1
00.211-148	1	00.211-149	1
00.211-150	1	00.211-151	1
00.211-152	1	00.211-153	1
00.211-154	1	00.211-155	1
00.211-156	1	00.211-157	1
00.211-158	1	00.211-159	1
00.211-160	1	00.211-161	1
00.211-162	1	00.211-163	1
00.211-164	1	00.211-165	1
00.211-166	1	00.211-167	1
00.211-168	1	00.211-169	1
00.211-170	1	00.211-171	1
00.211-172	1	00.211-173	1
00.211-174	1	00.211-175	1
00.211-176	1	00.211-177	1
00.211-178	1	00.211-179	1
00.211-180	1	00.211-181	1
00.211-182	1	00.211-183	1
00.211-184	1	00.211-185	1
00.211-186	1	00.211-187	1
00.211-188	1	00.211-189	1
00.211-190	1	00.211-191	1
00.211-192	1	00.211-193	1
00.211-194	1	00.211-195	1
00.211-196	1	00.211-197	1
00.211-198	1	00.211-199	1
00.211-200	1	00.211-201	1
00.211-202	1	00.211-203	1
00.211-204	1	00.211-205	1
00.211-206	1	00.211-207	1
00.211-208	1	00.211-209	1
00.211-210	1	00.211-211	1
00.211-212	1	00.211-213	1
00.211-214	1	00.211-215	1
00.211-216	1	00.211-217	1
00.211-218	1	00.211-219	1
00.211-220	1	00.211-221	1
00.211-222	1	00.211-223	1
00.211-224	1	00.211-225	1
00.211-226	1	00.211-227	1
00.211-228	1	00.211-229	1
00.211-230	1	00.211-231	1
00.211-232	1	00.211-233	1
00.211-234	1	00.211-235	1
00.211-236	1	00.211-237	1
00.211-238	1	00.211-239	1
00.211-240	1	00.211-241	1
00.211-242	1	00.211-243	1
00.211-244	1	00.211-245	1
00.211-246	1	00.211-247	1
00.211-248	1	00.211-249	1
00.211-250	1	00.211-251	1
00.211-252	1	00.211-253	1
00.211-254	1	00.211-255	1
00.211-256	1	00.211-257	1
00.211-258	1	00.211-259	1
00.211-260	1	00.211-261	1
00.211-262	1	00.211-263	1
00.211-264	1	00.211-265	1
00.211-266	1	00.211-267	1
00.211-268	1	00.211-269	1
00.211-270	1	00.211-271	1
00.211-272	1	00.211-273	1
00.211-274	1	00.211-275	1
00.211-276	1	00.211-277	1
00.211-278	1	00.211-279	1
00.211-280	1	00.211-281	1
00.211-282	1	00.211-283	1
00.211-284	1	00.211-285	1
00.211-286	1	00.211-287	1
00.211-288	1	00.211-289	1
00.211-290	1	00.211-291	1
00.211-292	1	00.211-293	1
00.211-294	1	00.211-295	1
00.211-296	1	00.211-297	1
00.211-298	1	00.211-299	1
00.211-300	1	00.211-301	1
00.211-302	1	00.211-303	1
00.211-304	1	00.211-305	1
00.211-306	1	00.211-307	1
00.211-308	1	00.211-309	1
00.211-310	1	00.211-311	1
00.211-312	1	00.211-313	1
00.211-314	1	00.211-315	1
00.211-316	1	00.211-317	1
00.211-318	1	00.211-319	1
00.211-320	1	00.211-321	1
00.211-322	1	00.211-323	1
00.211-324	1	00.211-325	1
00.211-326	1	00.211-327	1
00.211-328	1	00.211-329	1
00.211-330	1	00.211-331	1
00.211-332	1	00.211-333	1
00.211-334	1	00.211-335	1
00.211-336	1	00.211-337	1
00.211-338	1	00.211-339	1
00.211-340	1	00.211-341	1
00.211-342	1	00.211-343	1
00.211-344	1	00.211-345	1
00.211-346	1	00.211-347	1
00.211-348	1	00.211-349	1
00.211-350	1	00.211-351	1
00.211-352	1	00.211-353	1
00.211-354	1	00.211-355	1
00.211-356	1	00.211-357	1
00.211-358	1	00.211-359	1
00.211-360	1	00.211-361	1
00.211-362	1	00.211-363	1
00.211-364	1	00.211-365	1
00.211-366	1	00.211-367	1
00.211-368	1	00.211-369	1
00.211-370	1	00.211-371	1
00.211-372	1	00.211-373	1
00.211-374	1	00.211-375	1
00.211-376	1	00.211-377	1
00.211-378	1	00.211-379	1
00.211-380	1	00.211-381	1
00.211-382	1	00.211-383	1
00.211-384	1	00.211-385	1
00.211-386	1	00.211-387	1
00.211-388	1	00.211-389	1
00.211-390	1	00.211-391	1
00.211-392	1	00.211-393	1
00.211-394	1	00.211-395	1
00.211-396	1	00.211-397	1
00.211-398	1	00.211-399	1
00.211-400	1	00.211-401	1
00.211-402	1	00.211-403	1
00.211-404	1	00.211-405	1
00.211-406	1	00.211-407	1
00.211-408	1	00.211-409	1
00.211-410	1	00.211-411	1
00.211-412	1	00.211-413	1
00.211-414	1	00.211-415	1
00.211-416	1	00.211-417	1
00.211-418	1	00.211-419	1
00.211-420	1	00.211-421	1
00.211-422	1	00.211-423	1
00.211-424	1	00.211-425	1
00.211-426	1	00.211-427	1
00.211-428	1	00.211-429	1
00.211-430	1	00.211-431	1
00.211-432	1	00.211-433	1
00.211-434	1	00.211-435	1
00.211-436	1	00.211-437	1
00.211-438	1	00.211-439	1
00.211-440	1	00.211-441	1
00.211-442	1	00.2	



WIZ	OMSCHRIJVING	DATUM	PAR.
A	LLOYER WAZIGINGEN	12-10-03	
B	PLANCKEN C-DECK	12-10-03	
C	PLANCKEN L-DECK	12-10-03	
D	PLANCKEN DECK	12-10-03	
E	WAGWERK VOORWAARDEN	12-10-03	
F	WAGWERK VOORWAARDEN	12-10-03	
G	WAGWERK VOORWAARDEN	12-10-03	



**DOUBLE BOTTOM**  
DUBBELBODEN



**CONSTRUCTION PLAN**  
DUBBELBODEN EN C-DECK

NO. 00335-339

010

**PRINCIPAL DIMENSIONS**  
 LENGTH BP = 311' 238"  
 BREADTH = 16.65' 846"  
 DEPTH = 11.81' 227"  
 DRAUGHT = 15' 11 1/2"  
 PILLAR UP TO DECK IN BAY  
 LLOYDS LENGTH 36% OF 36M  
 36M - 50.5' 3"  
 TOP OF OVERFLOW 157 MM  
 ABOVE UPPERDECK AT STEER  
 DOUBLE BOTTOM FITTED UNDER  
 THE BELLS OF ALL PILLARS OR  
 EQUIVALENT ARRANGEMENT

REVISION	DATE	BY	DATE	BY

APPROVED BY LLOYDS 11-11-03  
APPROVED BY OWNERS

N.V. KON. MIJ. 'DE SCHEDE' VIJSSINGEN

AFDELING: SCHIFFSBOUWENKAMER

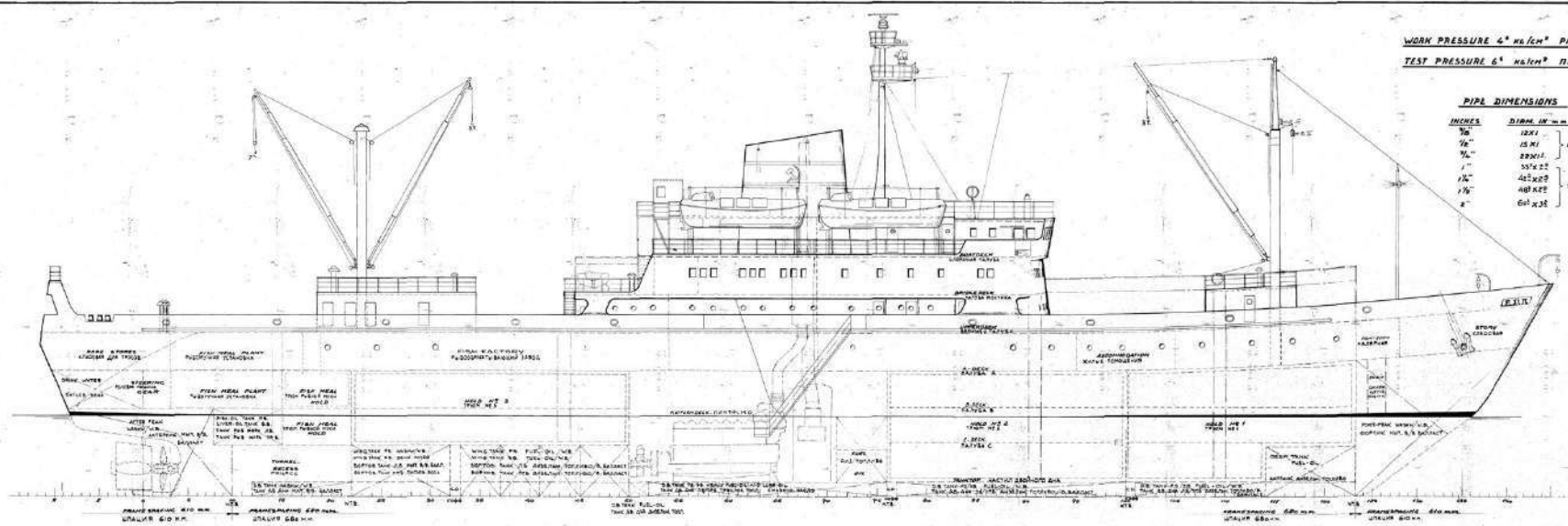
BESTEMMING:

BENAMING: KONINKLIJKE SCHIFFSBOUW EN S  
CONSTRUCTION PLAN

NO. 00335-338

010





WORK PRESSURE 4<sup>kg/cm<sup>2</sup></sup> ПРОБНОЕ ДАВЛ 4<sup>kg/cm<sup>2</sup></sup>  
 TEST PRESSURE 6<sup>kg/cm<sup>2</sup></sup> ПРОБНОЕ ДАВЛ 6<sup>kg/cm<sup>2</sup></sup>

**PIPE DIMENSIONS**

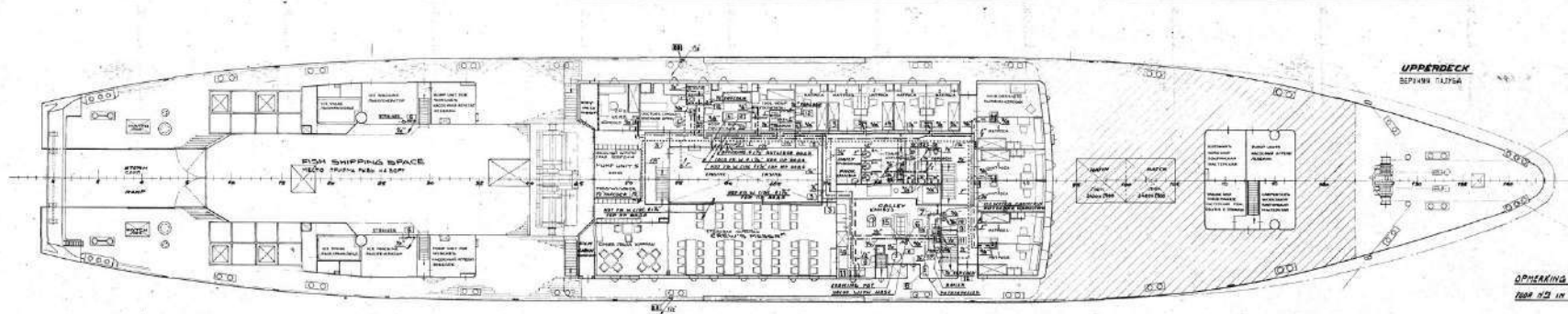
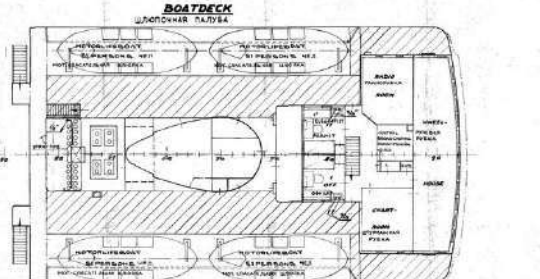
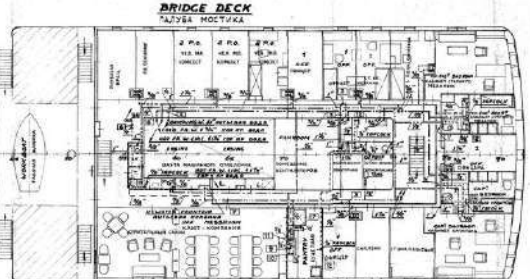
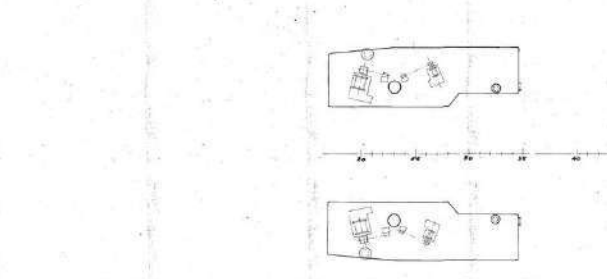
INCHES	DIAM IN MM
3/8"	12X1
1/2"	15X1
3/4"	20X1
1"	25X1
1 1/4"	40X2
1 1/2"	48X2
2"	60X2

W/L	ONE-DRAWING	DATUM	PART
A	INSTALLING VESSEL PARTS TO VESSEL	11.12.51	11.12.51
B	REVISIONS	11.12.51	11.12.51
C	REVISIONS	11.12.51	11.12.51
D	REVISIONS	11.12.51	11.12.51
E	REVISIONS	11.12.51	11.12.51
F	REVISIONS	11.12.51	11.12.51
G	REVISIONS	11.12.51	11.12.51
H	REVISIONS	11.12.51	11.12.51

**REMARKS**

PIPES 3/8" - 1/2" - 3/4" TO BE OF SEAMLESS DRAWN COPPER AND TO BE CONNECTED WITH CAPILLARY COUPLINGS  
 LARGER SIZE TO BE OF SEAMLESS STEEL AND TO BE CONNECTED WITH WING JOINTS  
 COUPLERS OF FLANGES AND SOE GALVANIZED  
 BRASS STAPLES TO BE PLACED UNDERNEATH ALL WASHBASIN  
 TRAPCKS WITH ROSE CONNECTION TO BE PLACED IN ALL TRILETS, PATRIRES, SALLEY AND BRUNARY  
 ALL LOWER POINTS OF THE PIPELINE TO BE PROVIDED WITH DRAINTRAPS  
 SALTWATER PIPES TO BE INSULATED WITH CANVAS ONLY AGAINST PENETRATION THE HOT FRESHWATER LINE LINE TO BE INSULATED WITH CORK LAYERS OF 1" THICKNESS PARAFFINUM PLASTERED AND CANVAS STITCHED  
 SMALL BRANCHES TO BE INSULATED WITH DOUBLE PARAFFINUM COATH  
 COPPER PIPES FOR DRINKING WATER SUPPLIED WITH SANITARY BODY CERTIFICATE

--- NOT DOMESTIC WATER LINE LINE КАРПОВИТИ ГР ПРОВОД ГОР МАТРИЦАМИ ВОДА  
 --- NOT DOMESTIC WATER ГОР МАТРИЦА ВОДА  
 --- COLD DOMESTIC WATER ХОЛОДНАЯ ПИТЬЕВАЯ ВОДА  
 --- HOT DOMESTIC WATER ГОР МАТРИЦА ВОДА  
 --- COLD DRINKING WATER ХОЛОДНАЯ ПИТЬЕВАЯ ВОДА  
 --- WARM DRINKING WATER ОХЛОДЖАЮЩАЯ ВОДА  
 --- SALTWATER SANITARY САНИТАРНАЯ ЗАБЕДКА ВОДА



**TOP OF WINCHDECK HOUSE**  
 ОРУДИЯ ПИТЬЕВОЙ МАСТРОКОВ

**APPROXIMATE**  
 1944 12 11 216 APPENDIX 17 4002

GENERAL ARRANGEMENT	NO. 1	NO. 2	NO. 3	NO. 4	NO. 5	NO. 6	NO. 7	NO. 8	NO. 9	NO. 10	NO. 11	NO. 12	NO. 13	NO. 14	NO. 15	NO. 16	NO. 17	NO. 18	NO. 19	NO. 20	NO. 21	NO. 22	NO. 23	NO. 24	NO. 25	NO. 26	NO. 27	NO. 28	NO. 29	NO. 30	NO. 31	NO. 32	NO. 33	NO. 34	NO. 35	NO. 36	NO. 37	NO. 38	NO. 39	NO. 40	NO. 41	NO. 42	NO. 43	NO. 44	NO. 45	NO. 46	NO. 47	NO. 48	NO. 49	NO. 50	NO. 51	NO. 52	NO. 53	NO. 54	NO. 55	NO. 56	NO. 57	NO. 58	NO. 59	NO. 60	NO. 61	NO. 62	NO. 63	NO. 64	NO. 65	NO. 66	NO. 67	NO. 68	NO. 69	NO. 70	NO. 71	NO. 72	NO. 73	NO. 74	NO. 75	NO. 76	NO. 77	NO. 78	NO. 79	NO. 80	NO. 81	NO. 82	NO. 83	NO. 84	NO. 85	NO. 86	NO. 87	NO. 88	NO. 89	NO. 90	NO. 91	NO. 92	NO. 93	NO. 94	NO. 95	NO. 96	NO. 97	NO. 98	NO. 99	NO. 100
---------------------	-------	-------	-------	-------	-------	-------	-------	-------	-------	--------	--------	--------	--------	--------	--------	--------	--------	--------	--------	--------	--------	--------	--------	--------	--------	--------	--------	--------	--------	--------	--------	--------	--------	--------	--------	--------	--------	--------	--------	--------	--------	--------	--------	--------	--------	--------	--------	--------	--------	--------	--------	--------	--------	--------	--------	--------	--------	--------	--------	--------	--------	--------	--------	--------	--------	--------	--------	--------	--------	--------	--------	--------	--------	--------	--------	--------	--------	--------	--------	--------	--------	--------	--------	--------	--------	--------	--------	--------	--------	--------	--------	--------	--------	--------	--------	--------	--------	--------	--------	---------

**N.V. KON. MIJ. DE SCHELDE VLISSEINGEN**

**GENERAL ARRANGEMENT**  
**SUPPLY WATERLINES**

00335-338 986 4001



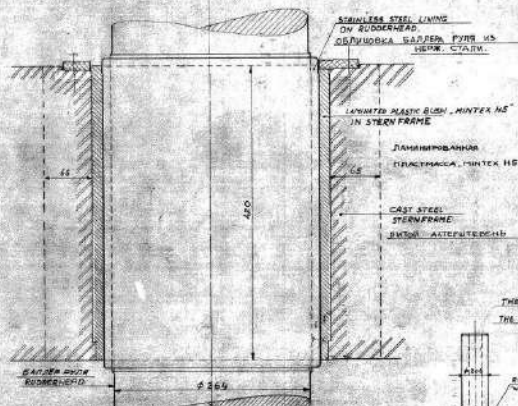






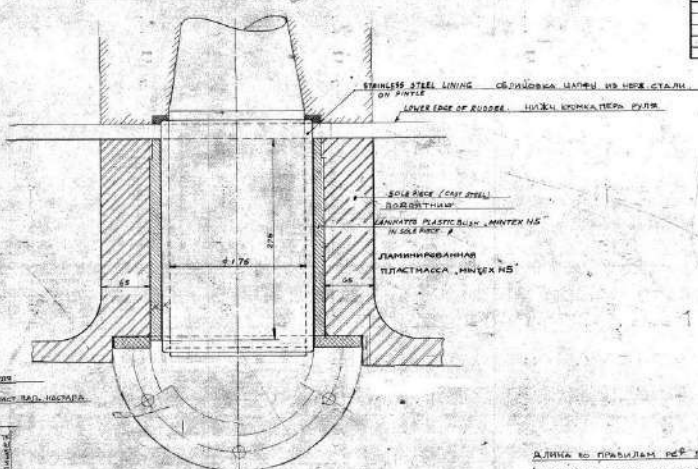
**DETAIL OF RUDDERHEAD BEARING**

ПОДРОБНОСТЬ ПОДШИПНИКА ВАЛОВОГО РУДЕРА



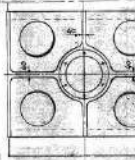
**DETAIL OF PINTLE IN SOLEPIECE**

ПОДРОБНОСТЬ ВЕТВИ ПОДШИПНИКА

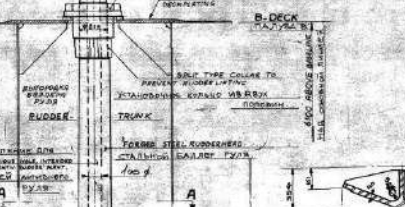


WIJZ.	OMSCHRIJVING	DATUM	PAR.
A	OPTEKENDIGEN VAN DE WERKEN	18.11.53	1
B	MAK. VAN BLISSEN VAN DE VERBODEN. LLOYD	23.11.53	2
C	WISBEVEEDT VOR. WERKSTUKEN	30.1.54	3

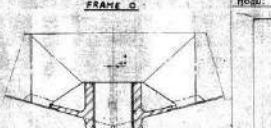
**SECTION A-A**



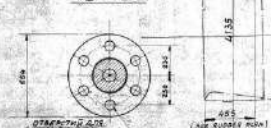
**B-DECK**



**FRAME D**



**D-D**



ДЛИНА ВО ПРЯВИЦАХ ДЕР СПИРАКЛИС 14000, 32,16m + 302,37'  
 LLOYD'S LENGTH OF SHIP = 0,95x98m = 92,16m = 302,37 ft.  
 MAX. DRAUGHT: ОСАДА 5,50m = 18,05 ft.  
 LLOYD'S ICE CLASS 3. ДЕТСКОГО КЛАССА 3

MATERIAL OF THE STERNFRAME: WELDABLE CAST STEEL, CONFORM TO THE REQUIREMENTS OF LLOYD'S RULES, CHAPTER P5.  
 МАТЕРИАЛ АСТЕРНФРАМА: СВАЯЮЩАЯСЯ СТАЛЬ, СООТВЕТСТВУЮЩАЯ ТРЕБОВАНИЯМ ПЕРВОЙ ГЛАВЫ П5.

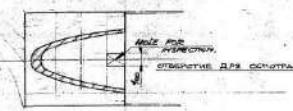
MATERIAL OF THE RUDDERHEAD: FORGED STEEL, CONFORM TO THE REQUIREMENTS OF LLOYD'S RULES, CHAPTER P6.  
 МАТЕРИАЛ ВАЛОВОГО РУДЕРА: КОВАНОЕ СТАЛЬНОЕ, СООТВЕТСТВУЮЩЕЕ ТРЕБОВАНИЯМ ПЕРВОЙ ГЛАВЫ П6.

WEIGHT OF STERNFRAME ABOUT 3000kg  
 ВЕС АСТЕРНФРАМА ОКОЛО 3000 кг

TRIAL SPEED 14 KNOTS SEA SPEED 7,5 KNOTS  
 ПРОВЕРКА СКОРОСТИ 14 УЗЛОВ СКОРОСТЬ НА КРУММЫХ ВОДЯНУХ 7,5 УЗЛОВ

FOR RUDDERSTOCK MATERIAL NOT COMPLYING WITH P 603, SEE NOTE 3, TABLE 44.  
 ДЛЯ ВАЛОВОГО РУДЕРА МАТЕРИАЛА НЕ СООТВЕТСТВУЮЩЕГО П 603, СМ. ПРИМЕЧАНИЕ 3, ТАБЛИЦА 44.

**SECTION E-E**

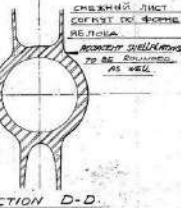
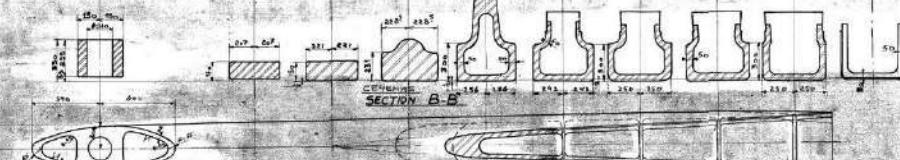


THE CLEARANCE BETWEEN THE PROPELLOR AND THE STERNFRAME IS TO BE RESPONSIBILITY OF THE BUILDERS AND THE OWNERS.

КОНЦЫ ВАЛОВОГО РУДЕРА И КОНЦЫ ВАЛОВОГО РУДЕРНОГО ВАЛА ДОЛЖНЫ БЫТЬ СЛАБЕЖЕ ЗАКРУГЛЕННЫМИ.

EDGES OF FASTENERS AND CORNERS OF KEYS ARE TO BE SLIGHTLY ROUNDED.

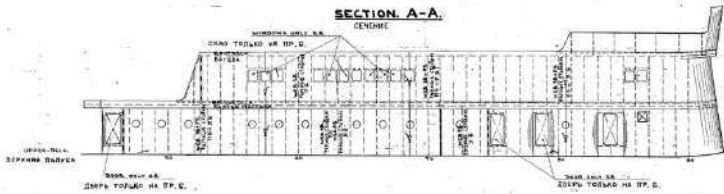
Поперечный срез руddерного валового подшипника и стержня для валового подшипника должен соответствовать следующим требованиям:  
 1. Концы валового подшипника и стержня должны быть слегка закруглены.  
 2. Усиленные фланцы и углы из материала должны быть закруглены.  
 3. Максимальный радиус жонгированного стержня должен быть равен диаметру стержня.  
 4. Валовый подшипник и стержень должны быть изготовлены из закаленной стали.  
 5. Валовый подшипник должен быть изготовлен из закаленной стали.  
 6. Валовый подшипник и стержень должны быть изготовлены из закаленной стали.  
 7. Стержень подшипника должен соответствовать требованиям первой главы П5.  
 8. Стержень подшипника должен соответствовать требованиям первой главы П5.



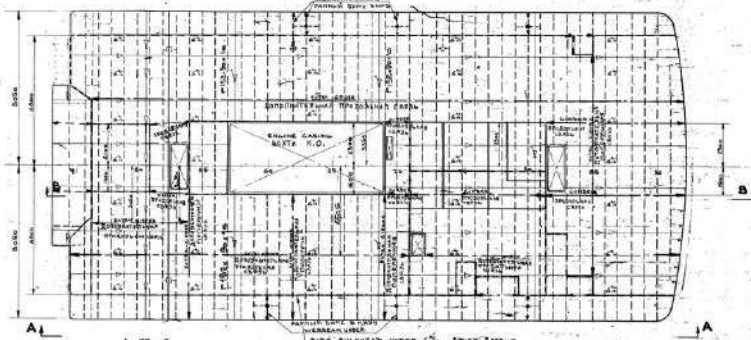
BENNING CONSTRUCTION PLAN	
OPDRACHTNOO: 00317-333	MOOD: 010
OPDRACHTNOO: 00317-333	MOOD: 010
OPDRACHTNOO: 00317-333	MOOD: 010

N.V. KON. MIJ. „DE SCHELDE“ VLISSINGEN	
AFDELING: SCHEEPSBOUWTEKENKAMER	BESTEMMING:
BENAMING: CONSTRUCTION PLAN STERNFRAME	
SCHAAL: 1:5	TEK. NO: 010
OPDRACHTNOO: 00317-333	MOOD: 010
OPDRACHTNOO: 00317-333	MOOD: 010

**SECTION A-A**  
DENEHE



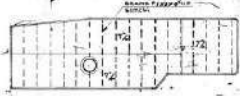
**BRIDGE DECK**  
BRIDGE DECK



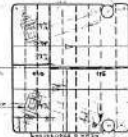
**SECTION B-B**  
DENEHE



**WINCH DECK**  
WINCH DECK



**WINCH DECK**  
WINCH DECK

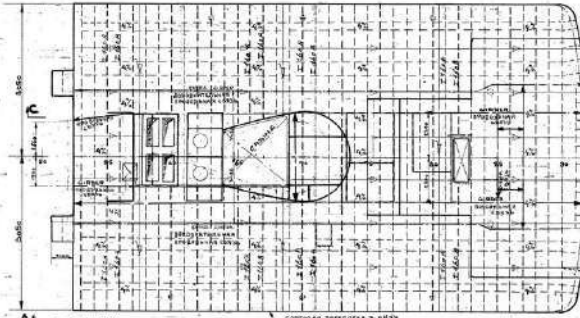


SUPPORT OF WINCHES, WINCHES, MAST,  
MATA, DECKS, STEERING BEAR, ETC.  
TO SURVEYOR'S SATISFACTION

FRAME SPACING 680%

**BOAT DECK**  
BOAT DECK

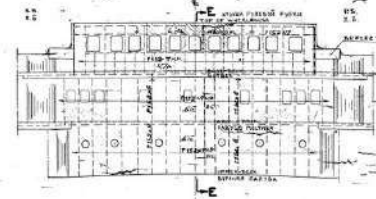
ADDITIONAL STIFFENING IN WAY OF BOAT DECKS TO SURVEYOR'S SATISFACTION



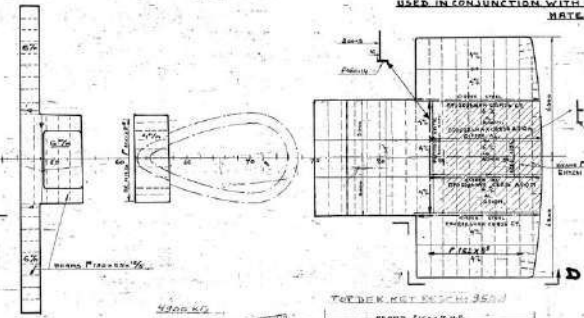
**SECTION C-C**  
DENEHE



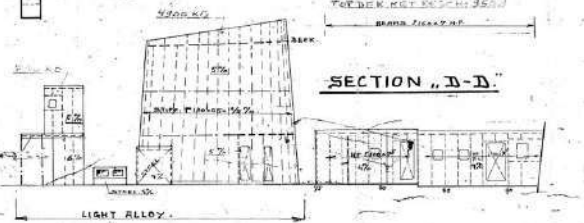
**FRONT BULKHEAD**  
FRONT BULKHEAD



**TOP OF WHEELHOUSE**  
TOP OF WHEELHOUSE



**SECTION D-D**



NOTE:  
SUITABLE PRECAUTIONS TO BE TAKEN  
AS REGARDS INSULATION FROM FIRE  
AND RICKETAL JOINTS.  
JOINTS CONTAINING BITUMEN LEAD,  
MERCURY OR COPPER SHOULD BE  
USED IN CONJUNCTION WITH THIS  
MATERIAL.

APPROVED BY LLOYDS 15-11-63

**SECTION E-E**



DRAWING CONSTRUCTION PLAN			
OPERATION	NO.	DATE	BY
CONSTRUCTION PLAN	00 335-338	15-11-63	010
REVISIONS			
TEKENING VERSTREKT AAN:	ART. NO.	DATE	
BEEL' KANT SCHEEP			
SCHEEPBOUW			
INDELIKER			
BOUWMEESTER			
SCHEEPBOUW			
METALWERK			
BOUW			
KOPERSLAGERS			
PLAATWERK			
BOUWMEESTER			
BOUWMEESTER			
OPZICHTER			

N.V. KON. MIJ. „DE SCHELDE“ VLISSINGEN			
ARDELING	BESTEMMING		
SCHEEPBOUWTEKENING			
BENAMING:			
<b>CONSTRUCTION PLAN</b>			
<b>SUPERSTRUCTURE-DECKS AND FRONT BULKHEAD</b>			
KONSTRUKTIEVE TEGENWOORDELIJKE PLAN VAN DE BOUW			
SCHAAL: 1:1000	STUK: 1	GET. BY: 010	VERZ. DAT: 15-11-63
OPDRACHT: 00 335-338	HOOFD: 00 335-338	TEK. NO: 010	BLAD NO: 1/1