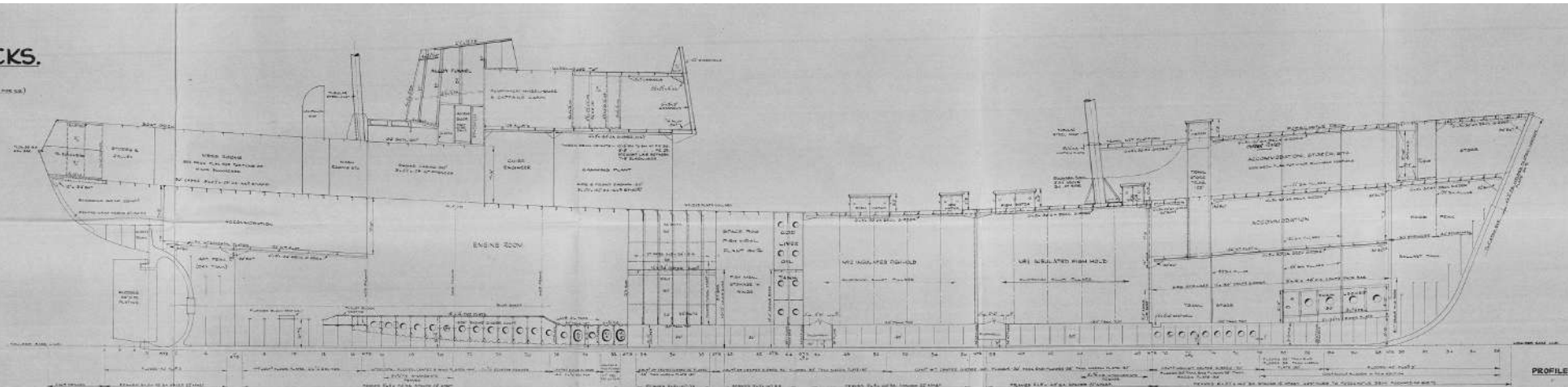
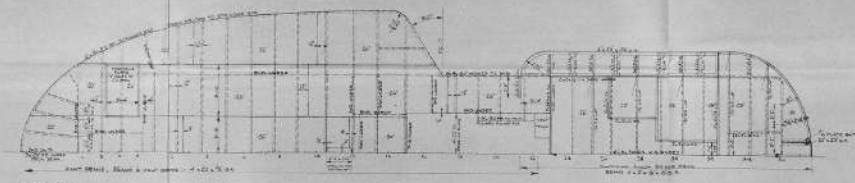


PLAN N° 3.
SHIP N° 2415.
PROFILE & DECKS.
SCALE - 1/4" = 1 FOOT.

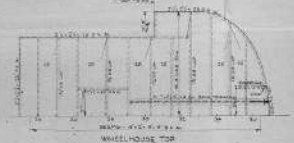
CLASHES TO BE NOTED. SEE ALL MOTOR TRIMMING (FROM VIEWS 205 & 206)
 EXPANSIONS TO BE NOTED. SEE ALL MOTOR TRIMMING (FROM VIEWS 205 & 206)
 LAYOUT ADJUSTMENTS TO BE NOTED. SEE ALL MOTOR TRIMMING (FROM VIEWS 205 & 206)



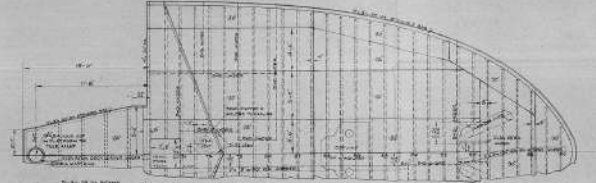
PROFILE



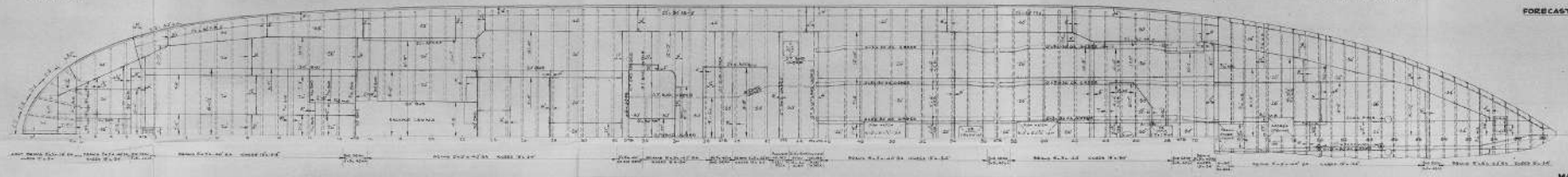
BOAT DECK



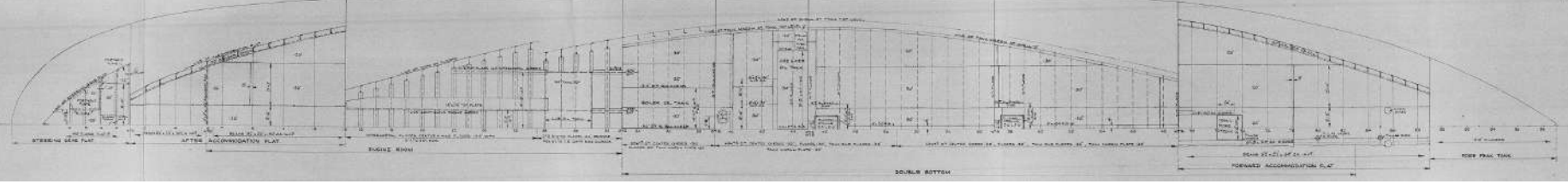
WHEELHOUSE TOP



FORECASTLE DECK



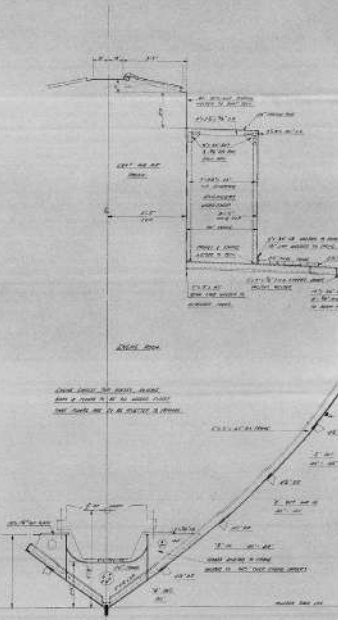
MAIN DECK



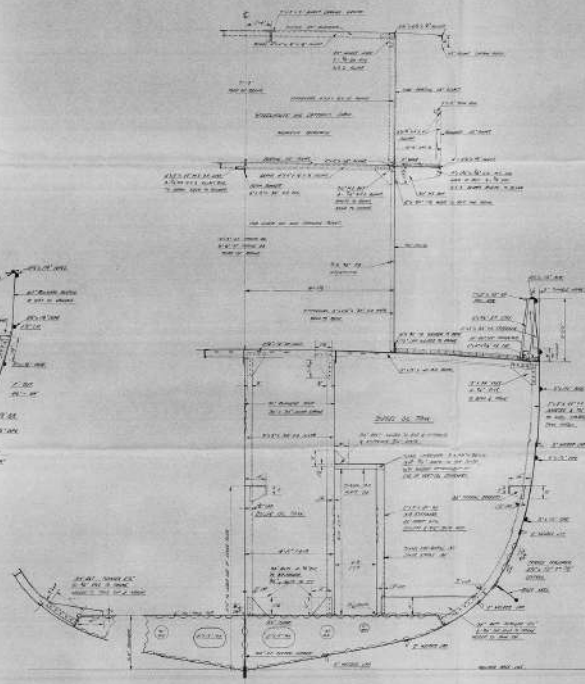
DOUBLE BOTTOM

MOTOR TRAWLER 'PIONER'
STRUCTURAL SECTIONS.
 (AS FITTED)

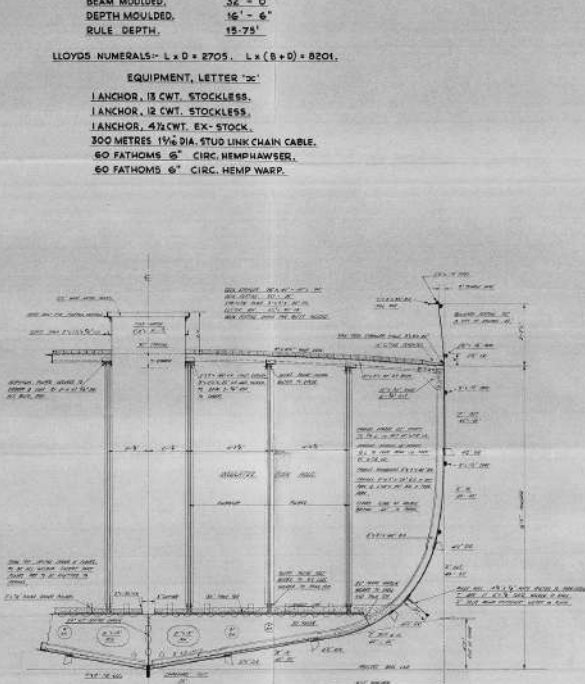
SCALE:- 1/2" = 1 FOOT & AS MARKED



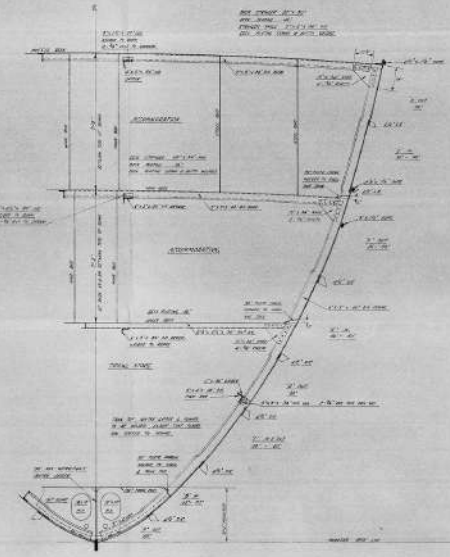
SECTION THROUGH AFT END OF ENGINE ROOM.
 Looking Aft.



SECTION THROUGH OIL FUEL BUNKERS.
 Looking Forward.



SECTION THROUGH FISH HOLD.
 Looking Forward.



SECTION THROUGH FORWARD.
 Looking Forward.

CLASS:- LLOYDS +100 A.I. MOTOR TRAWLER.
 STRENGTHENED FOR NAVIGATION IN ICE.

DIMENSIONS

LENGTH S.P.	171'- 0"
BEAM MOULDED.	32'- 0"
DEPTH MOULDED.	16'- 6"
RULE DEPTH.	15'- 7 1/2"

LLOYDS NUMERALS:- L x D = 2705. L x (B + D) = 8201.

EQUIPMENT, LETTER 'C':
 1 ANCHOR, 12 CWT. STOCKLESS.
 1 ANCHOR, 12 CWT. STOCKLESS.
 1 ANCHOR, 4 1/2 CWT. EX-STOCK.
 300 METRES 1 1/2 DIA. STUD LINK CHAIN CABLE.
 60 FATHOMS 6" CIRC. HEMP HAWSER.
 60 FATHOMS 6" CIRC. HEMP WARP.

PLAN No. 5.

SHIP Nos. 241-260s.

RUDDER AND STERNFRAME.

SCALES AS MARKED.

AREA OF RUDDER 50.00 sq. ft.

A & D 55.60 x 1.35 = 75.61

SERVICE SPEED 12.0 KNOTS

